

1. General information

The data logger is operated by keypad and display. The function of the keys **F1** to **F4** is shown in the display. The keys **F1** and **F4** are for changing menu items and channels respectively. **F5** or **Enter** calls the main menu where any setting and function menu is accessible. Short pressing the **Enter** key calls the submenus. The **Esc** key is for cancelling an action, for leaving submenus or for quitting messages.

If the display is adjusted to a particular period, it deactivates itself without key actuation. It can be activated again by any key press.

Further information on operation and function → see detailed operating manual!

2. Notes on accumulator charging of the pipeline test case with built-in printer

Prior to any test, please make sure that both the accumulator of the data logger and the one of the printer are sufficiently charged.

Mobile mini printer PORT1:

The accumulator is charged by the enclosed charger. The LED indicates the charging state.

(Charging time at completely discharged printer accumulator up to 5 h !)

red (permanet): charging
green (permanent): charging finished
red (flashing): accumulator error

Built-in printer:

The accumulator is charged along with the one of the data logger by the supplied charger. The printer's LED indicates the printer's charging state which is shown on display.

(charging time at completely discharged printer accumulator up to 8 h !)

green (flashing): charging
green (permanent): charging finished

3. Activating/deactivating

Activating measurement

Long pressing the **F5** key.

Confirmation prompt „Switch on?“ appears.

Confirm by **F1** → measurement on!

Deactivating measurement

Long pressing the **F5** key.

Confirmation prompt „Switch off?“ appears.

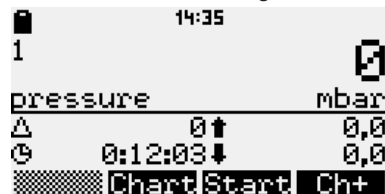
Confirm by **F1** → measurement off!

Devices with **switch** are activated/deactivated by switch actuation. No confirmation prompt appears here!

After activating measurement, the device logs readings. Now e.g. the pipeline can be inflated, meanwhile pressure can be monitored on display or a test without device support can be performed.



F5 → activating



measurement and recording started

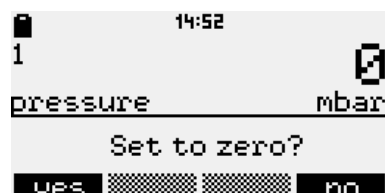
4. Zeroing relative pressure (absolute pressure transducer)

Call main menu when measurement is on. Select the menu item „Set to zero“ by arrow keys. Call it by Enter or long pressing **Esc** key.

Confirmation prompt „Set to zero?“ appears.

F1 → The current absolute pressure is used as reference pressure for the relative pressure. The displayed relative pressure is now 0!

Note: Zeroing when state is pressureless only!



confirm by F1

5. Reset delta value, measurement period minimum/maximum

Call main menu when measurement is on. Select the menu item „Reset Min/Max“ by arrow keys and call by Enter or long pressing Enter.

Confirmation prompt „Reset Min/Max?“ appears.

F1 → saved minimum and maximum as well as measurement period and delta value are reset when sampling next time.

Note: Minimum and maximum can only be shown via thermal printer!



confirm by F1

6. Performing prepared test (option RLBK menu)

Entering any test parameter must be done prior to test start by PWB-Soft 2.1 RLB or PWB-Soft 3.0 RLB on PC.

Pressing **F3** key (start) → test starts, min/max values and delta value are reset. The delta value indicates the difference between the current value to the one shown upon start phase. (e.g. pressure drop).

The description of any test phase (e.g. „*station.phase*“) is indicated and must be confirmed by **Enter**!

A countdown timer shows the remaining time of the phase. **F3** finishes the current phase early (e.g. when the pressure release test of a G496-C3 test is finished).

The number of test phases depends on the adjusted test! The last phase of any test is the *main test*. An error message will be issued if this phase early stops!

When performing level measurement using the level tube, the main test shows, additional to the level difference, the respective amount of water loss!

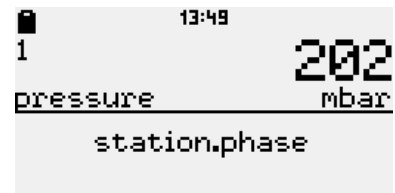
After test period procedure, one of the following messages will appear:

“Test regulations complied”

“Test regulations not complied”

Attention: Test evaluation (passed/failed) must be conducted by a qualified person!

Note: After terminating the main test, the device will stop measurement logging. Current readings are still shown, but are not recorded any more! Quick deactivating measurement for log printout is therefore not necessary!



7. Chart printout („on-site“ printout)

After terminating a test, a test log can be printed out by a dedicated thermal printer. A PC1450 includes a built-in printer which is automatically activated/deactivated for the printout. However, before using the PC1400, the external thermal printer (accessory) must be connected and switched-on!

Pressing **F3** → log printout menu appears.

Printable area is chosen by arrow keys and called by **Enter**:

Normal: chart shows the entire test

Zoom : only the main test is shown as chart

Both logs include any relevant test parameter as well as important readings.

Notes:

The printout can also be started via main menu item „Evaluation“ → „Print“ → „Protocol“.

An ongoing printout can be early cancelled by long pressing Esc key!

After printing, the recorded performance data remain saved!

